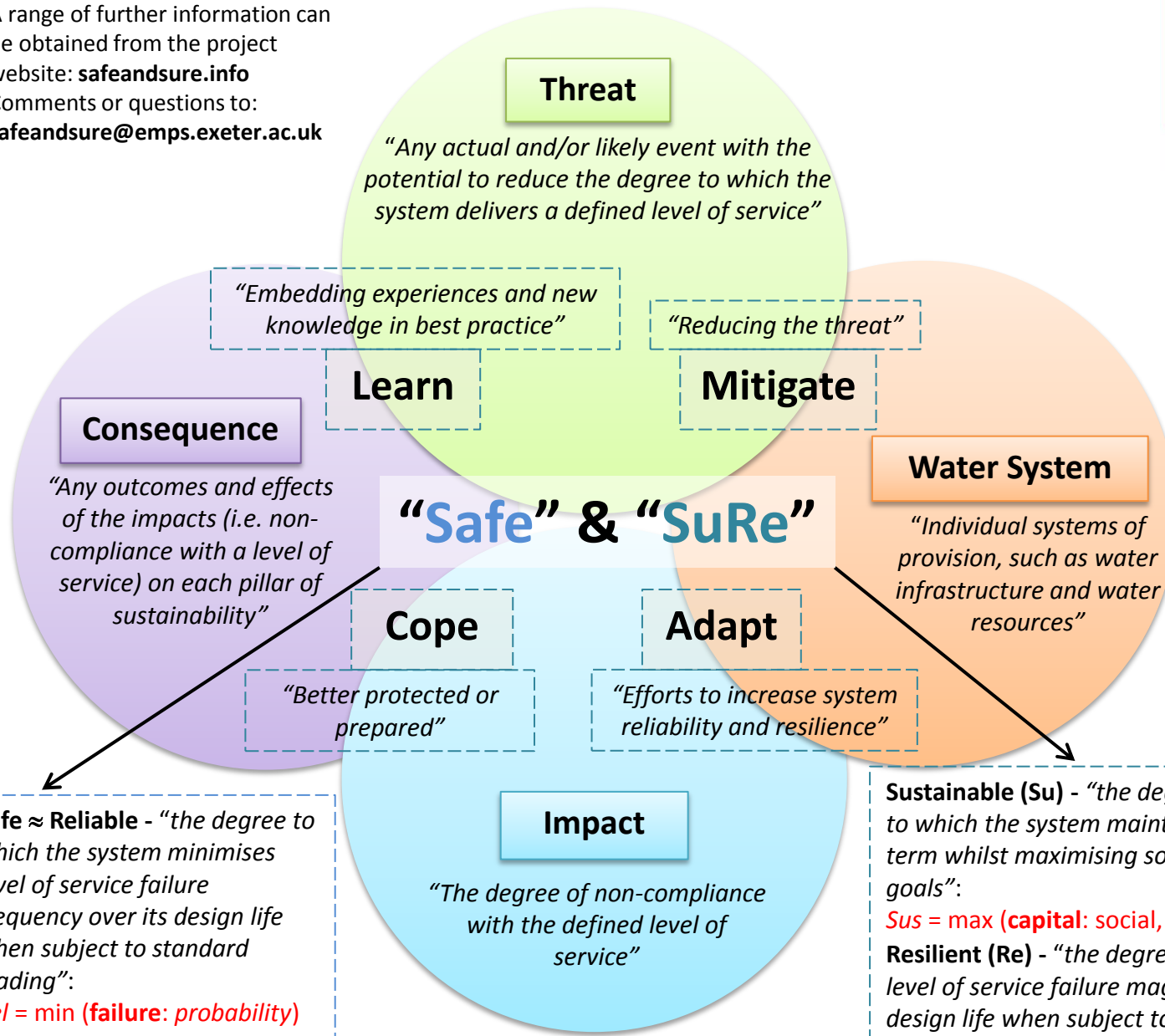


Safe and SuRe Technical Note 1 (TN1)

This first technical note provides a plain English overview of the framework, terminology and definitions.

A range of further information can be obtained from the project website: safeandsure.info
 Comments or questions to: safeandsure@emps.exeter.ac.uk



- ### Coming up in future TNs...
- Bottom-up, top-down or middle (failure) states?
 - How are risk & resilience related?
 - What is 'Global Resilience Analysis'?
 - Can Protection Motivation Theory help us cope?

Safe ≈ Reliable - "the degree to which the system minimises level of service failure frequency over its design life when subject to standard loading":
 $Rel = \min(\text{failure: probability})$

Sustainable (Su) - "the degree to which the system maintains levels of service in the long-term whilst maximising social, economic and environmental goals":
 $Sus = \max(\text{capital: social, economic, environmental})$
Resilient (Re) - "the degree to which the system minimises level of service failure magnitude and duration over its design life when subject to exceptional conditions":
 $Res = \min(\text{failure: magnitude, duration})$

Safe&SuRe

Water management



EPSRC

Pioneering research
and skills

safeandsure.info